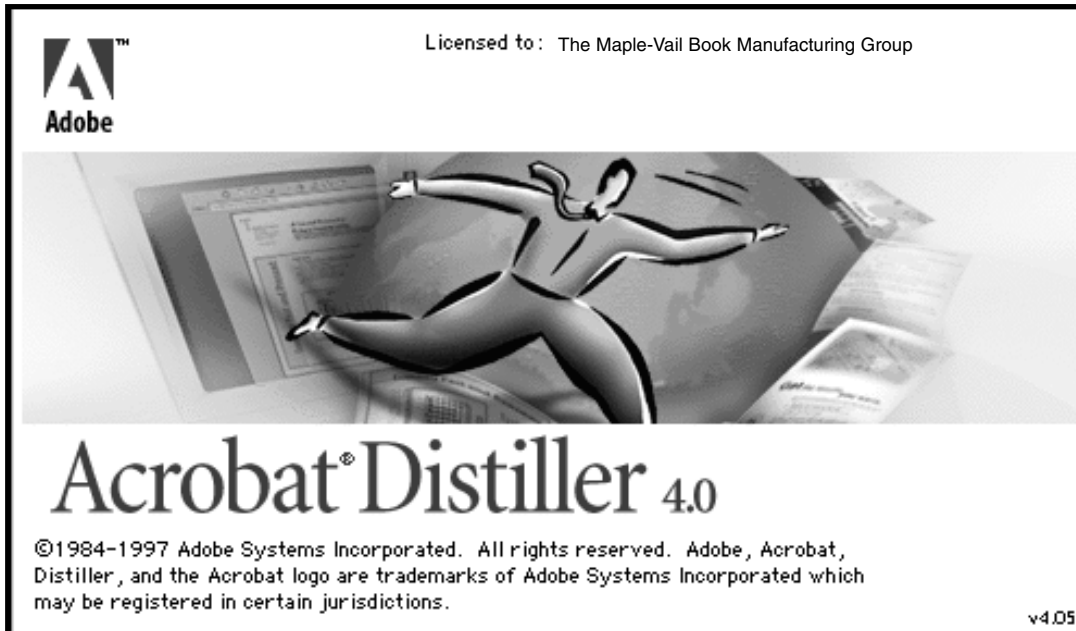


# Instructions for Distilling Adobe Acrobat PDF files

# Acrobat 4 Adobe



## Distiller 4.0.5 Settings and Preferences

For your convenience, copy the *Maple-Vail (4.0).joboptions* preferences into your systems Distiller Settings folder. This will provide for instant preferred Job Option settings, leaving only to set up the Font Locations menu for job specific fonts.

The Maple-Vail setting preferences are available for download at our web site [maple-vail.com/prepress](http://maple-vail.com/prepress).



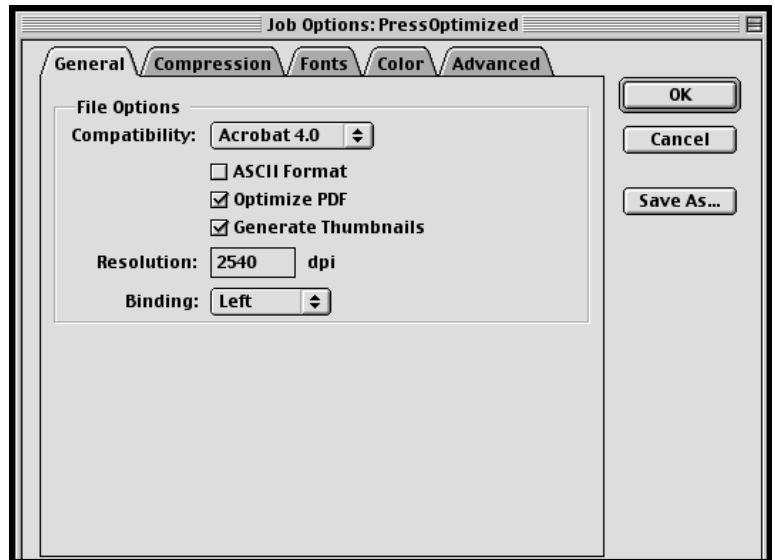
### Set the Job Options to Maple-Vail (4.0)

If the Maple-Vail job options preferences are not available on your system, you will need to set your *Job Options* (using Press Optimized) to match the following settings.



#### General:

- Select *Compatibility*: Acrobat 4.0
- Select *Optimize PDF*
- Select *Generate Thumbnails*
- Select *Resolution*: 2540 dpi
- Select *Binding*: Left



#### Compression:

##### Color Images

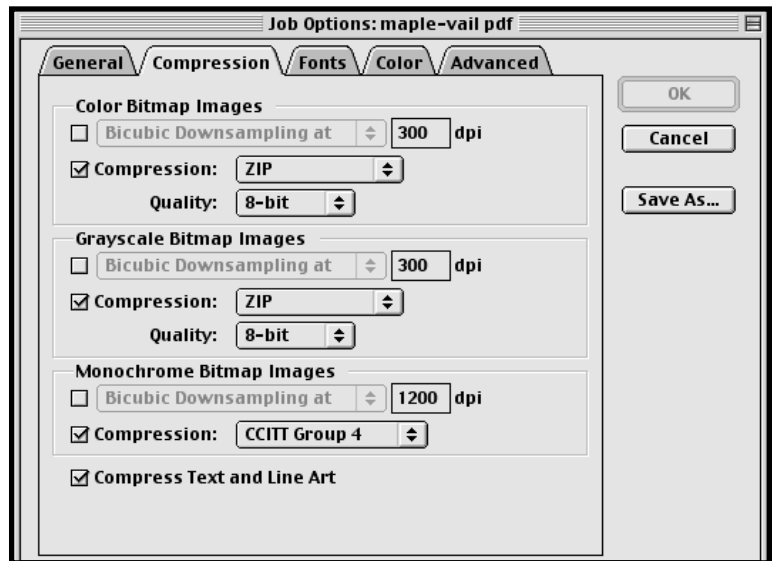
- Select *Compression*
- Select ZIP
- Select *Quality*: 8-bit

##### Grayscale Images

- Select *Compression*
- Select ZIP
- Select *Quality*: 8-bit

##### Monochrome Images

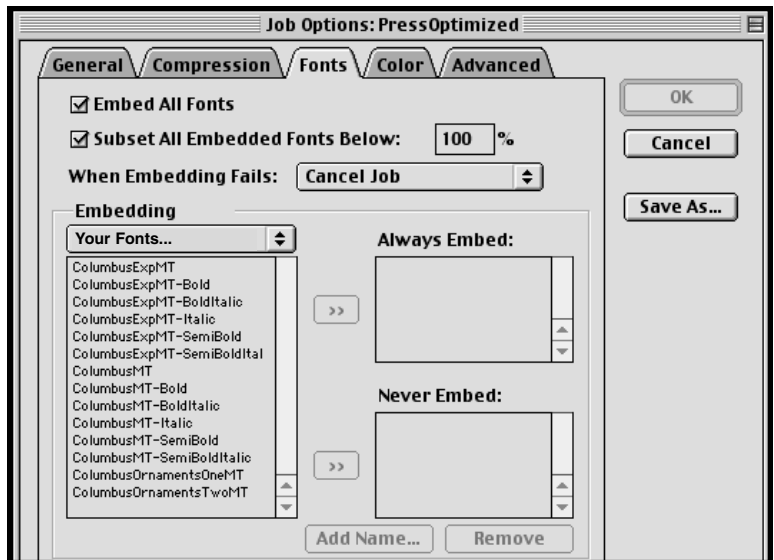
- Select *Compression*
- Select CCITT Group 4
- Select *Compress Text and Line Art*



### \*Fonts:

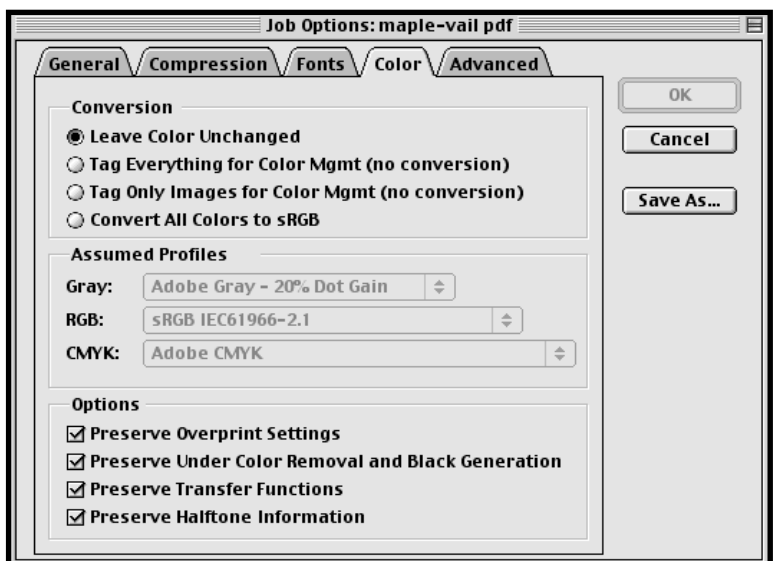
Set up Font Locations under the Settings menu in Distiller to link fonts specifically used for your job prior to adjusting the Adobe PDF Settings.

- Select *Embed All Fonts*
- Select *Subset All Embedded Fonts Below:*
- Type: 100%
- Select *When Embedding Fails:* Cancel Job
- Fonts that had been set up under Font Locations will automatically appear in the left window.



### Color:

- Select *Leave Color Unchanged*
- Select *Preserve Overprint Settings*
- Select *Preserve Under Color Removal and Black Generation*
- Select *Preserve Transfer Functions*
- Select *Preserve Halftone Settings*



### Advanced:

- Select *Preserve Level 2 copypage Semantics*
- Select *Process DSC*
- Select *Resize Page and Center Artwork for EPS Files*
- Select *Preserve EPS Info from DSC*
- Select *Preserve Document Info from DSC*
- Width: 8.5
- Height: 11
- Select *Units:* Inches

