

# PostScripting Instructions for One-Color Work

# Adobe 1.5 InDesign



## Setting and Preferences

Use these instructions to write PostScript from InDesign 1.5. You will then be able to create PDFs from the PostScript by using Acrobat Distiller.

Separate instructions are available on the *maple-vail.com* web site for distilling PDF files.

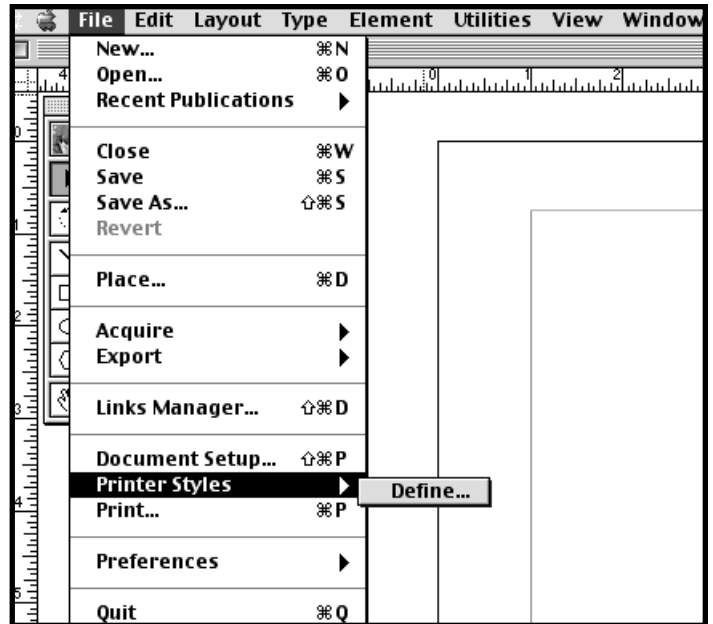
Although InDesign is capable of exporting PDF files in one step, Adobe recommends not using this feature in versions prior to InDesign 2.0.



## Define Printer Styles

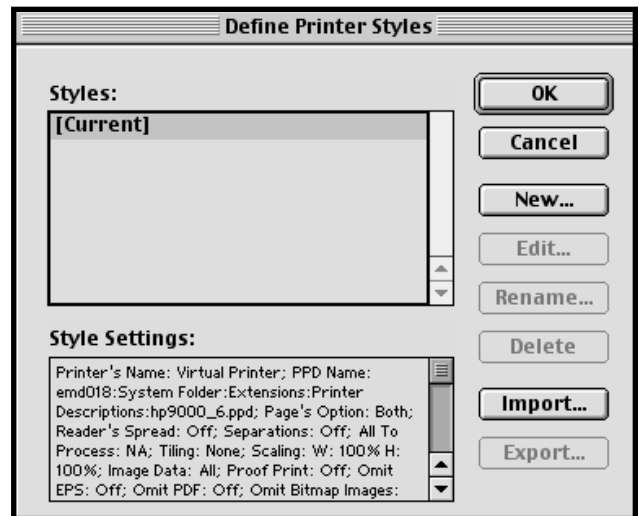
### File Menu settings:

- Select: Printer Styles...Define



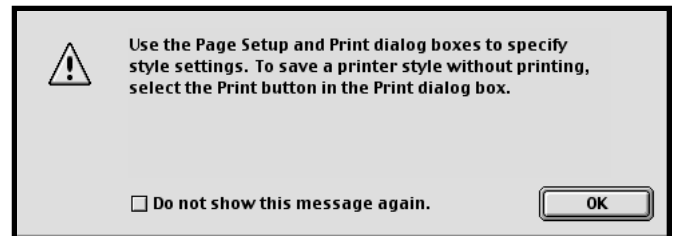
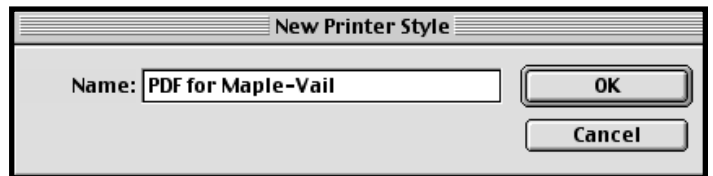
### Define Printer Styles:

- Select *New...*



### New Printer Styles:

- Create name and read message



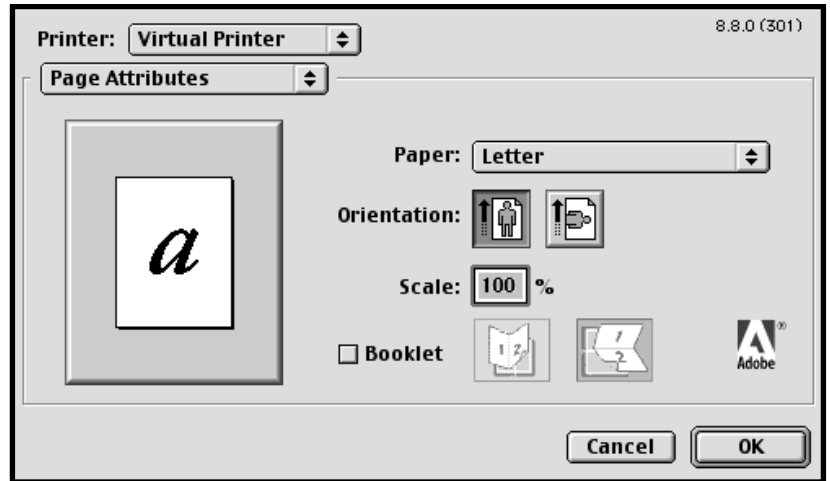
### Printer:

Choose *Virtual Printer* from Pulldown Menu

### Page Attributes settings:

Choose *Page Attributes* from Pulldown Menu

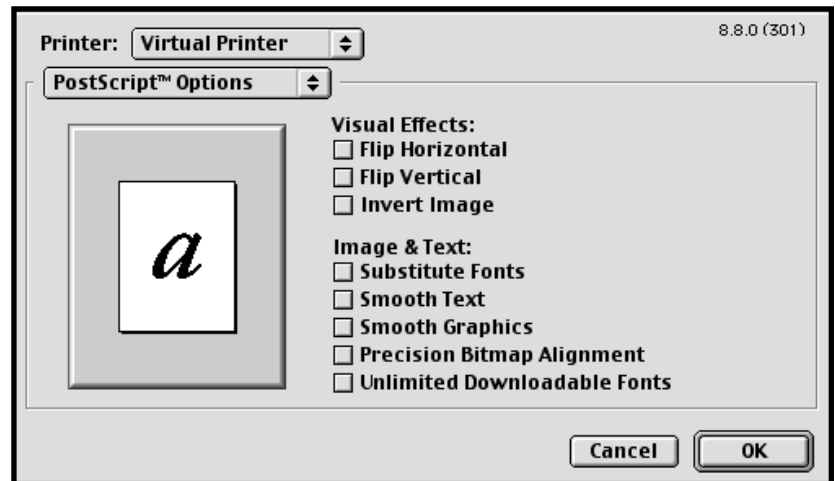
- Select *Paper*: Letter
- Select *Orientation*: Portrait (Left icon)
- Select *Scale*: Type 100%



### PostScript Options settings:

Choose *PostScript Options* from Pulldown Menu

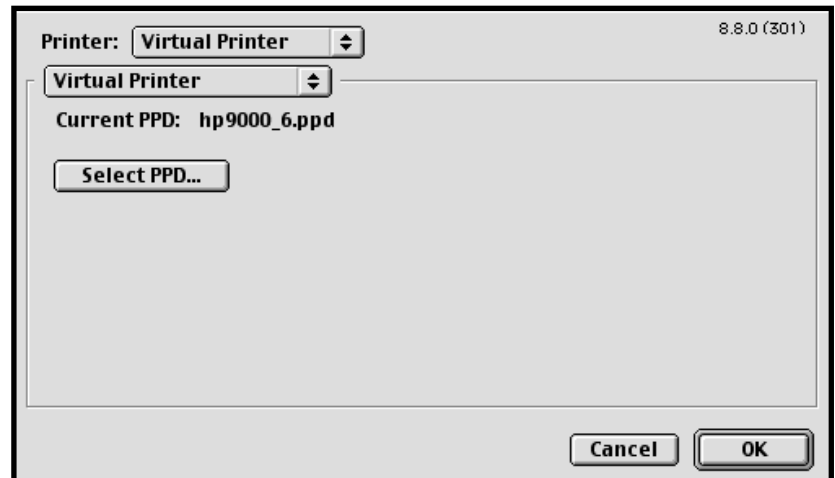
- No selections are needed



### Virtual Printer settings:

Choose *Virtual Printer* from Pulldown Menu  
(Select an appropriate PPD the first time using the *Select PPD* button)

- Current PPD: hp 9000\_6.ppd

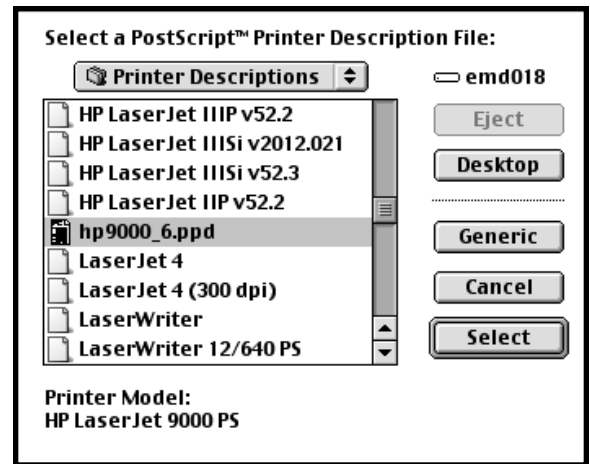


### Printer Descriptions settings:

Choose *Printer Descriptions* from Pulldown Menu

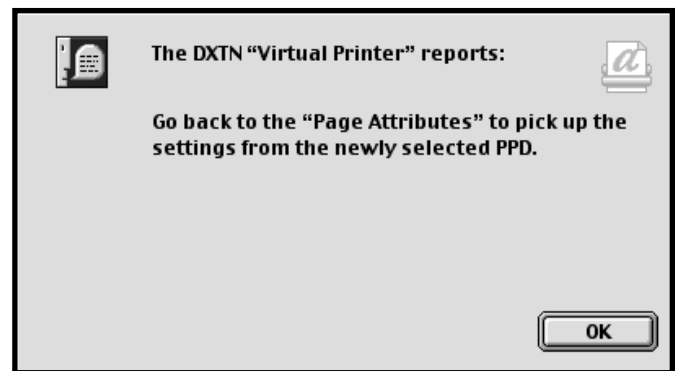
Go to the Printer Descriptions folder located in your systems Extension folder.

- Select the recommended HP 9000 PPD or another quality high output PPD
- Click *Select*



### DXTN Information Box:

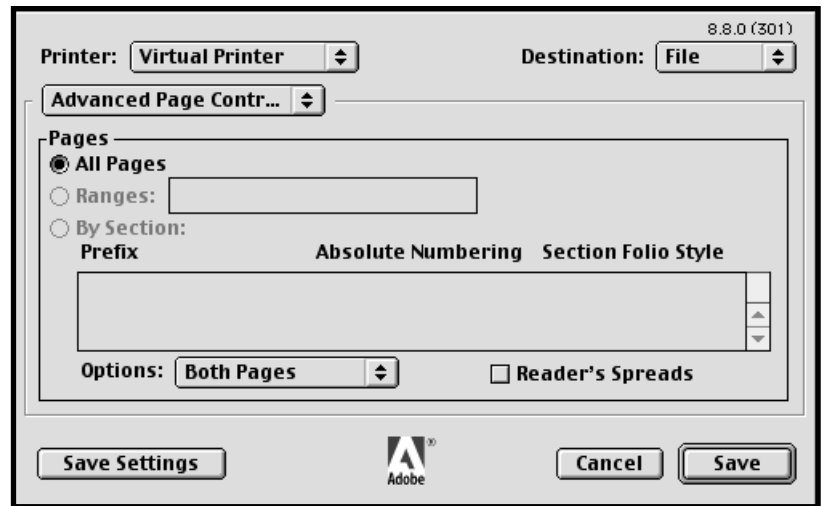
- Click *OK*



### Advanced Page Control settings:

Choose *Advanced Page Control* from Pulldown Menu

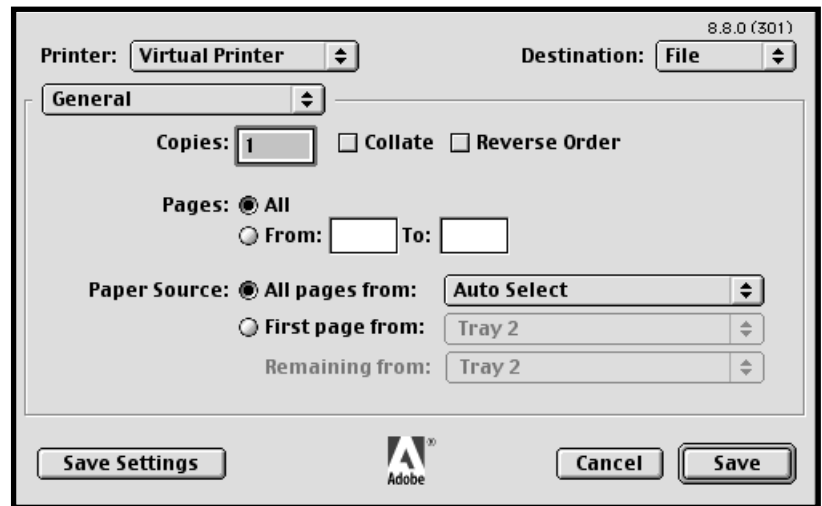
- Select *All Pages*
- Select *Options: Both Pages*



### General settings:

Choose *General* from Pulldown Menu

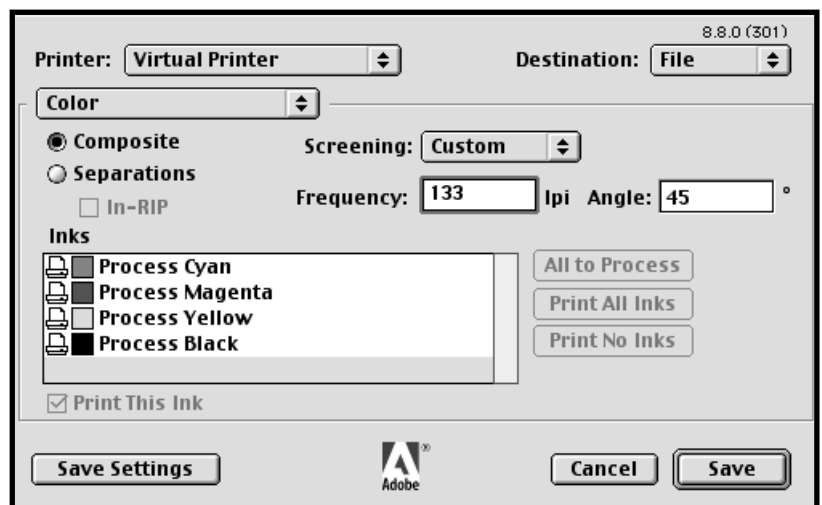
- Select *Copies: 1*
- Select *Pages: All*
- Select *Paper Source: All pages from: Use the pulldown menu to choose a dedicated tray*



### Color settings:

Choose *Color* from Pulldown Menu

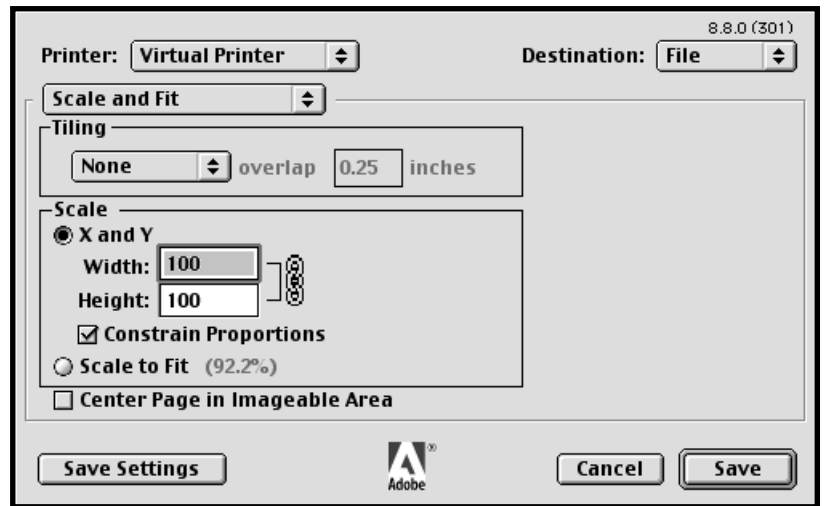
- Select *Composite*
- Select *Screening: Custom*
- Select *Frequency: 133 lpi*
- Select *Angle: 45*
- Select *Print This Ink*



### Scale and Fit settings:

Choose *Scale and Fit* from Pulldown Menu

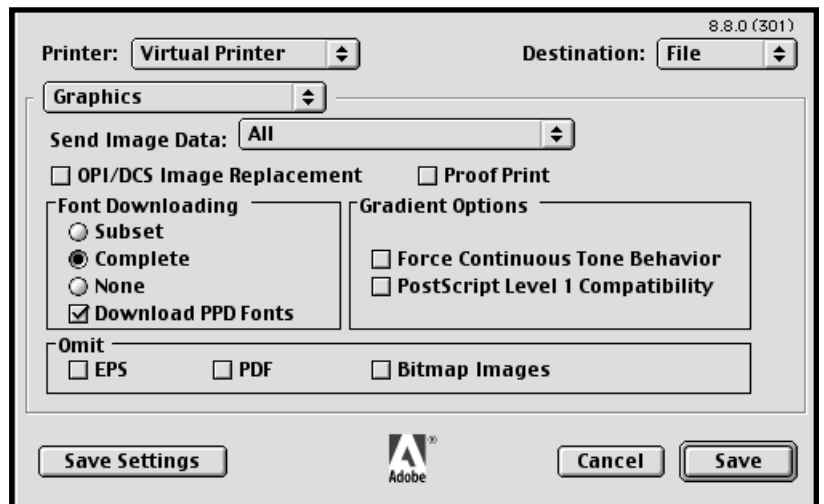
- Select *Tiling*: None
- Select *Scale*: X and Y
- For *Width*: Type 100
- For *Height*: Type 100
- Select *Constrain Proportions*



### Graphics settings:

Choose *Graphics* from Pulldown Menu

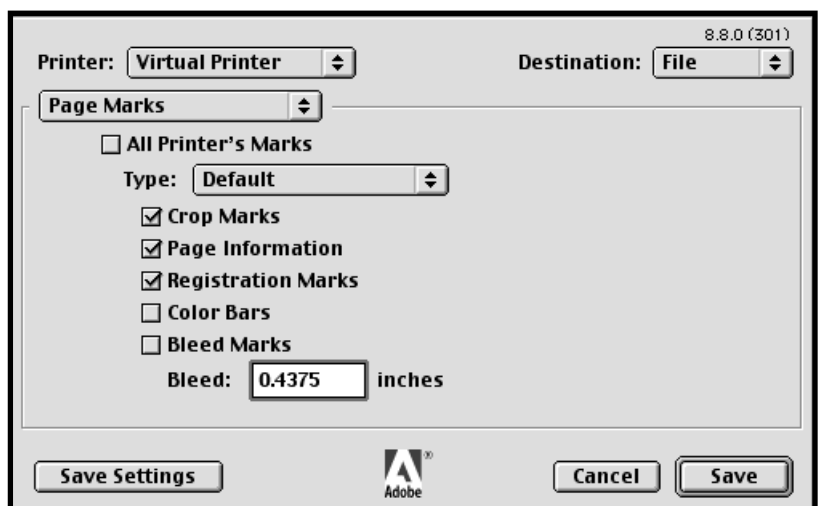
- Select *Send Image Data*: All
- Select *Font Downloading*: Complete
- Select *Font Downloading*: Download PPD Fonts



### Page Marks settings:

Choose *Page Marks* from Pulldown Menu

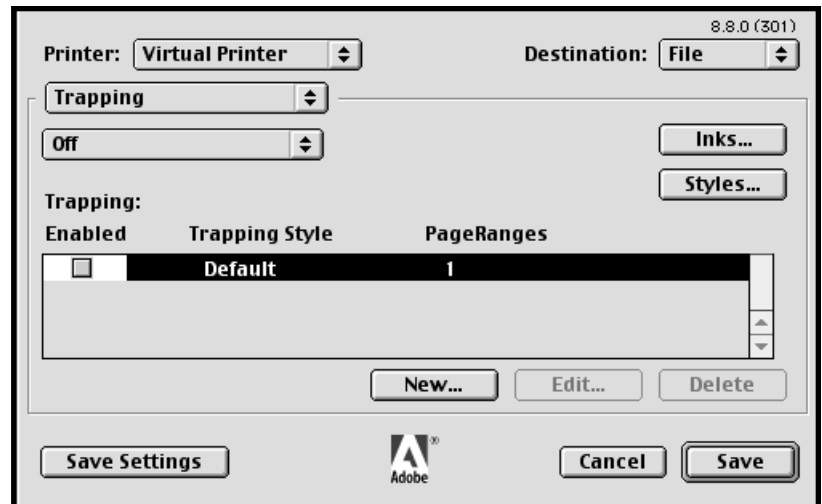
- Select *Type*: Default
- Select *Crop Marks*
- Select *Page Information*
- Select *Registration Marks*
- For *Bleed*: Type .4375 in



### Trapping settings:

Choose *Trapping* from Pulldown Menu

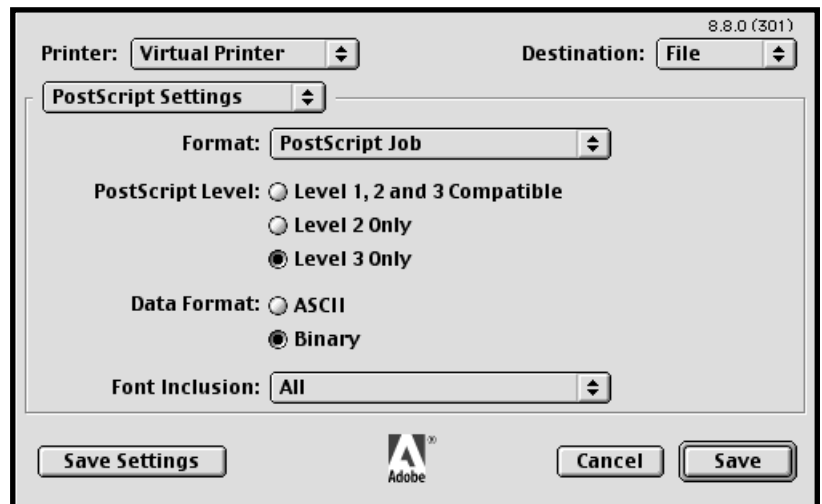
- Turn Trapping Off



### PostScript Settings:

Choose *PostScript Settings* from Pulldown Menu

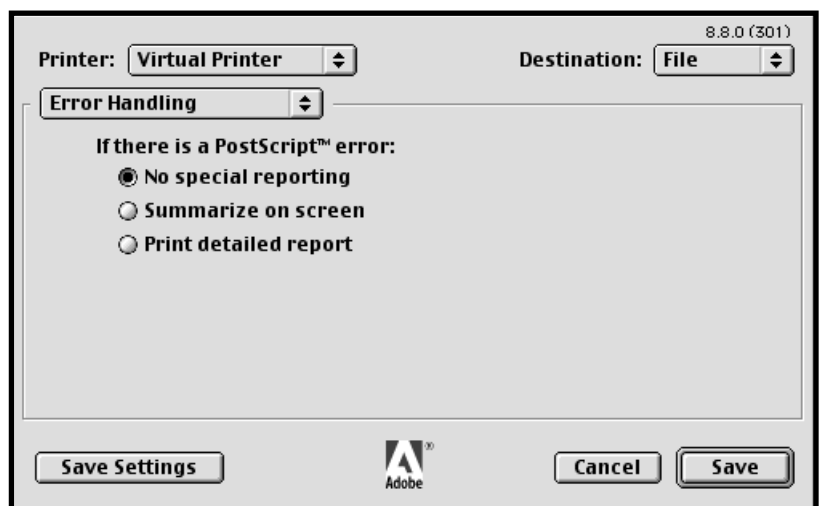
- Select *Format*: PostScript Job
- Select *PostScript Level*: Level 3 Only
- Select *Data Format*: Binary
- Select *Font Inclusion*: All



### Error Handling Settings:

Choose *Error Handling Settings* from Pulldown Menu

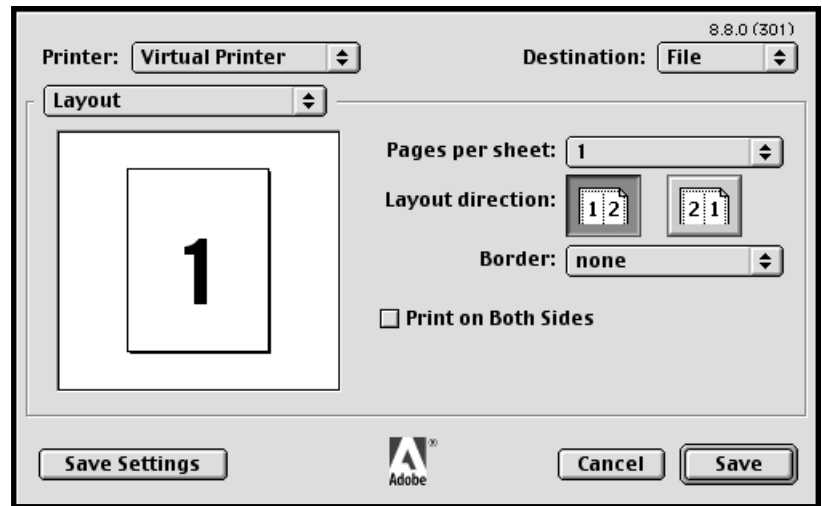
- Select *If there is a PostScript error*: No special reporting



### Layout settings:

Choose *Layout* from Pulldown Menu

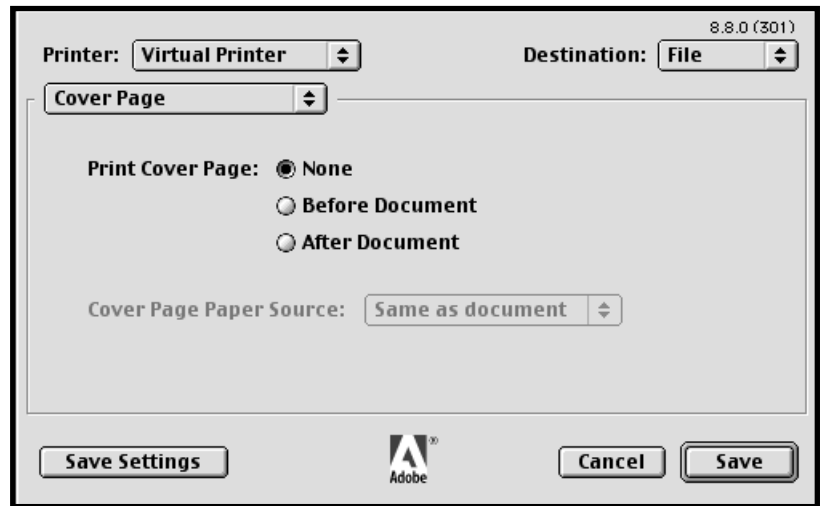
- Select *Pages per sheet*: 1
- Select *Layout direction*: 1/2 (Left icon)
- Select *Border*: None



### Cover Page settings:

Choose *Cover Page* from Pulldown Menu

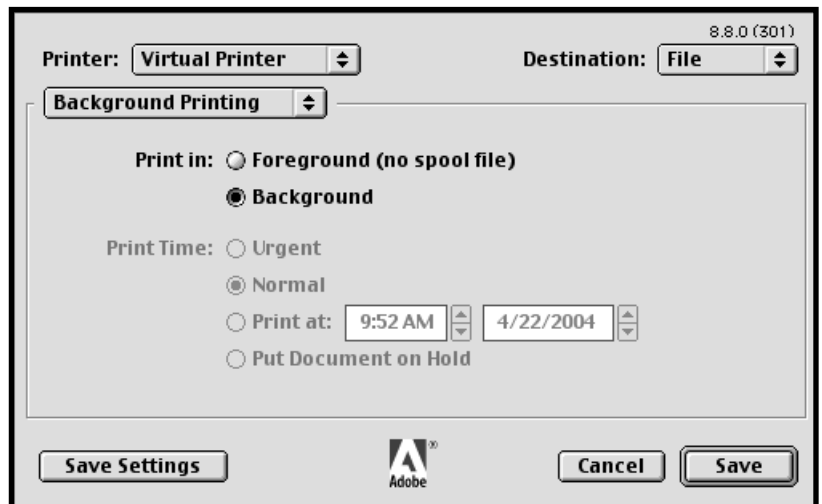
- Select *Print Cover Page*: None



### Background Printing settings:

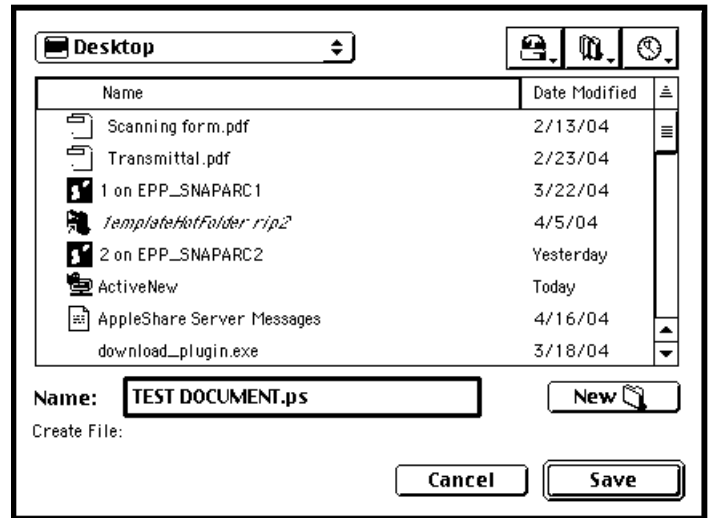
Choose *Background Printing* from Pulldown Menu

- Select *Print in*: Background
- Click *Save*



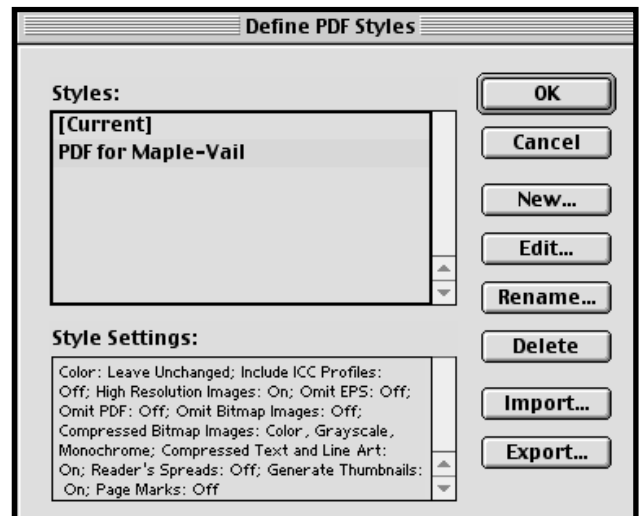
### Saving File Window:

- Type in a logical name for the PostScript file
- Click *Save*



### Define Printer Style:

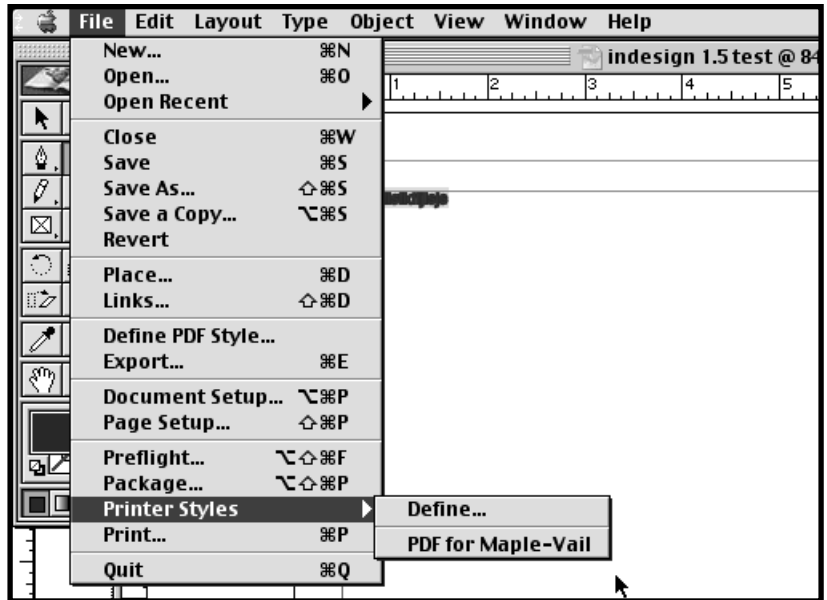
- New printer style will now be available for use every time document is printed



Select Printer Style to Write Postscript

**Printer Styles:**

- Choose settings created (PDF for Maple-Vail) and settings will automatically be applied.



**Create File:**

- Write the PostScript file. Then distill the PostScript file to PDF using Acrobat Distiller

